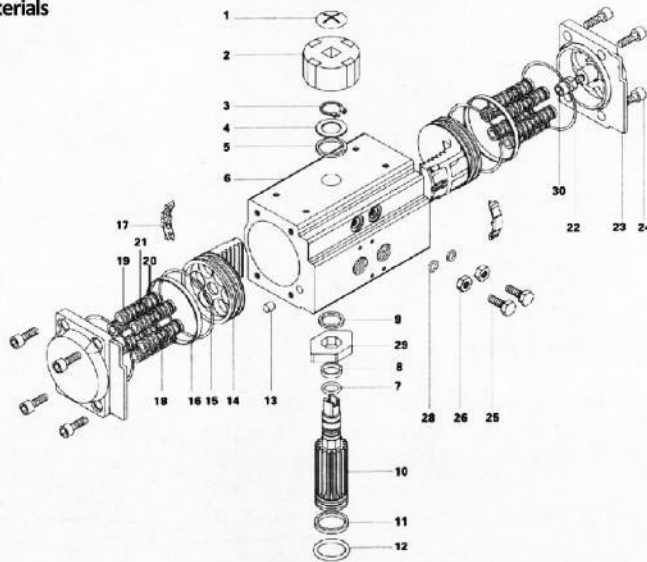


CREATE TO PERFECTION

零件及其材料 Parts & Materials



序號	名稱	數量	材料
1	指示器螺釘	1	不鏽鋼
2	指示器	1	塑料
3	彈性擋圈	1	不鏽鋼
4	墊片	1	不鏽鋼
5	外墊片	1	工程塑料
6	銅體	1	鋁合金
7	上軸“O”型圈	1	氟橡膠、丁腈橡膠
8	上軸支承圈	1	工程塑料
9	內墊片	1	工程塑料
10	軸	1	合金鋼
11	下軸支承圈	1	工程塑料
12	下軸“O”型圈	1	氟橡膠、丁腈橡膠
13	塞頭	2	橡膠
14	活塞	2	壓鑄鋁
15	活塞“O”型圈	2	氟橡膠、丁腈橡膠
16	活塞支承圈	2	工程塑料
17	活塞導板	2	尼龍66
18	彈簧	*	彈簧鋼
19	彈簧左套	*	尼龍66
20	彈簧右套	*	尼龍66
21	彈簧套連桿	*	銅
22	端蓋“O”型圈	2	氟橡膠、丁腈橡膠
23	端蓋	2	壓鑄鋁
24	端蓋緊固螺桿	8	不鏽鋼
25	調節螺桿	2	不鏽鋼
26	調節螺桿螺帽	2	不鏽鋼
27	調節螺桿墊圈	2	不鏽鋼
28	調節螺桿“O”型圈	2	氟橡膠、丁腈橡膠
29	凸輪	1	合金鋼
30	限位螺絲	2	不鏽鋼

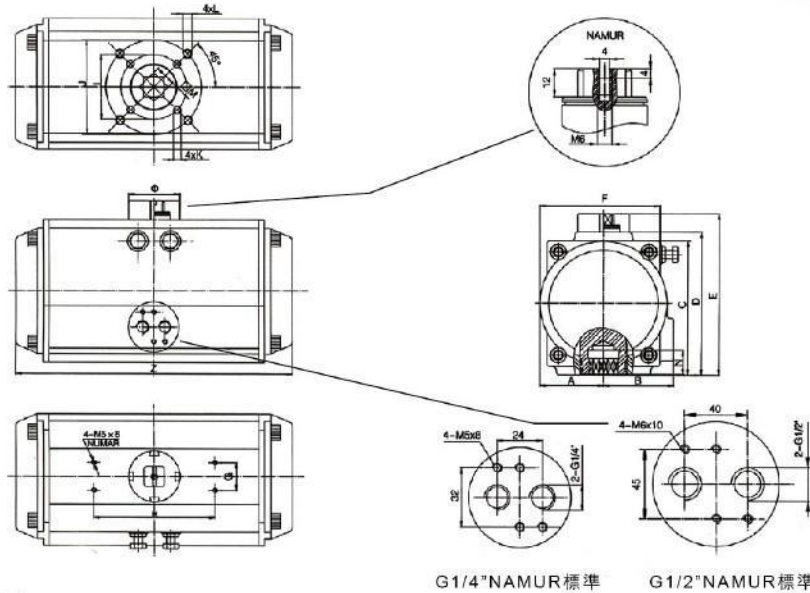
NO	Description	Qty	Standards Material
1	Indicator Screw	1	Stainless steel
2	Indicator	1	plastic
3	Snap Ring	1	Stainless steel
4	Washer	1	Stainless steel
5	Outside Washer	1	Engineering Plastics
6	Body	1	Aluminum Alloy
7	O-ring(Top)	1	Viton/NBR
8	Bearing Top	1	Engineering Plastics
9	Inside Washer	1	Engineering Plastics
10	Pinion	1	Alloy steel
11	Bearing Bottom	1	Engineering Plastics
12	O-ring Bottom	1	Viton/NBR
13	Plug	2	NBR
14	Piston	2	Die-casting aluminum
15	Piston O-ring	2	Viton/NBR
16	Piston Bearing	2	Engineering Plastics
17	Guide Piston	2	Nylon 66
18	Spring	*	Spring steel
19	Spring Retainer(L)	*	Nylon 66
20	Spring Retainer(R)	*	Nylon 66
21	Retainer Connector	*	Brass
22	End-Cap O-ring	2	Viton/NBR
23	End-Cap	2	Die-casting aluminum
24	End-Cap Stop Screw	8	Stainless steel
25	Adjust Screw	2	Stainless steel
26	Adjust Screw Nut	2	Stainless steel
27	Adjust Screw Washer	2	Stainless steel
28	Adjust Screw O-ring	2	Viton/NBR
29	Cam	1	Alloy steel
30	Stop Screw	2	Stainless steel

標準規格 Specifications

型號 Model	ES50/63/75/85/100/125/145/160/180/200/240	
缸體材質 Body material	鋁合金 Aluminum Alloy	
活塞材質 Piston material	壓鑄鋁 Die-casting Aluminum	
端蓋材質 Cover material	壓鑄鋁 Die-casting Aluminum	
輸出軸 Output shaft	45#、2CR13、SUS304、SUS316、SUS316L	
輸出扭力 Output torque	12N.M ~ 15000N.M	
開度 Opening	90°、120°、135°、180°	
氣源壓力 Gas pressure	0.2Mpa ~ 0.8Mpa	
環境溫度 Temperature around	標準型 Standard: -20° ~ +80° 高溫型 High temperature: -15° ~ +150° 低溫型 Low temperature: -40° ~ +80°	
材質處理 Material handling	陽極硬質氧化 Hard oxidation of anode、鍍鎳磷合金 Nickel-phosphorus alloy plated	
表面處理 Surface plating	烤漆 Plating、環氧樹脂 epoxy、噴塑 plastic、噴尼龍 nylon、噴四氟 PTFE、噴特氟龍 teflon spraying	
連接尺寸 Connection size	ISO5211 標準 ISO5211 Standard	
接口尺寸 Interface dimentions	NUMAR 標準 NUMAR standard	
作用方式 Action mode	單作用 Spring Return/ 雙作用 Double Acting	
允許洩漏 Leakage allowed	零洩漏 None	

ES 氣缸公制尺寸圖與表

Dimensions And Technical Data



尺寸表:dimension table

單位Unit:mm

型號 Model	A	B	C	D	E	F	G	H	I	J	K	L	M	N	Z	φ	氣源接口Air connection
ES-32	23	23	46	-	66	46	25	50	φ36	-	-	M5X7.5	9	12	110	φ40	NAMUR G1/8"
ES-50	30	41.5	65.5	72	92	65	30	80	φ36	φ50	M5X8	M6X10	11	14	147	φ40	NAMUR G1/4"
ES-63	36	47	81	87.5	107.5	72	30	80	φ50	φ70	M6X10	M8X13	14	18	168	φ40	NAMUR G1/4"
ES-75	42	53	94	99.5	119.5	81	30	80	φ50	φ70	M6X10	M8X13	14	18	184	φ40	NAMUR G1/4"
ES-85	46	57	98.5	108.7	128.7	92	30	80	φ50	φ70	M6X10	M8X13	17	21	204	φ40	NAMUR G1/4"
ES-100	57.5	64	122.5	133	153	109.5	30	80	φ70	φ102	M8X13	M10X16	22	26	268	φ40	NAMUR G1/4"
ES-125	67.5	74.5	145.5	155	175	127.5	30	80	φ70	φ102	M8X13	M10X16	22	26	301	φ55	NAMUR G1/4"
ES-145	75	77	161	172	192	137.5	30	80	φ102	φ125	M10X16	M12X20	27	31	390	φ55	NAMUR G1/4"
ES-160	87	87+	184	197	217	158	30	80	φ102	φ125	M10X16	M12X20	27	31	458	φ55	NAMUR G1/4"
ES-180	103	103	216	230	260	189	30	130		φ140		M16X25	36	50	525	φ80	NAMUR G1/4"
ES-200	113	113	235.5	255	285	210	30	130		φ140		M16X25	36	50	532	φ80	NAMUR G1/4"
ES-240	130	130	264.5	289	319	245	30	130		φ165		M20X25	46	60	602	φ80	NAMUR G1/4"
ES-270	147	147	299	326	356	273	30	130		φ165		M20X25	46	60	722	φ80	NAMUR G1/2" (NAMUR G1/4")

公制 Metric System	型號狀態 Model Status	ES-50 D S	ES-63 D S	ES-75 D S	ES-85 D S	ES-100 D S	ES-125 D S	ES-145 D S	ES-160 D S	ES-180 D S	ES-200 D S	ES-240 D S											
氣壓室體積 Pressure chamber volume	Φ (mm)	50	63	75	88	100	125	145	160	180	200	240											
行程調整 Stroke Adjustment	For 1°所需轉數	1/6turn	1/6turn	1/6turn	1/5turn	1/5turn	1/4turn	1/5turn	1/4turn	1/4turn	1/4turn	1/4turn											
開啟時空氣體積 Air Volume	(Open) (L)	0.09	0.16	0.31	0.51	0.71	1.54	2.41	3.14	4.26	5.94	10											
關閉時空氣體積 Air Volume	(Closed) (L)	0.15	0.26	0.49	0.78	1.11	2.34	3.78	4.92	6.89	9.46	15.2											
開啟時間 Opening Time(A)	(Sec.)	0.2	0.25	0.25	0.3	0.3	0.4	0.5	0.5	0.7	0.9	1.2	1.2	1.5	1.5	1.8	2	2.4	2.7	3.5	3.5	4.1	
關閉時間 Closing Time (A)	(Sec.)	0.25	0.3	0.3	0.35	0.35	0.5	0.5	0.6	0.6	0.9	1.1	1.4	1.4	1.8	1.7	2.1	2.2	2.8	3.2	4	4	4.6
單位近似重量 Approximate Unit Weight	(Kg)	1.38	1.45	2.03	2.05	2.7	2.9	3.13	3.60	5.77	6.85	8.90	10.1	13.25	15.55	20.14	24.00	31.30	35.25	46.80	54.80	67.28	80.20

■ 說明：(A) 驅動器的動作時間是下列測試條件所得：(1) 室溫 (2) 90°行程 (3) 電磁閥的管徑為4mm且流通能力為Qn 400L/min (4) 管內徑為8mm (5) 中性乾淨空氣 (6) 氣源壓力為5.5巴 (79.75 PSI) (7) 驅動器空載。 注：在使用中現場有一個或多個時參數不同，動作時間與開關度會有不同。

Instructions: (A) Action time of the actuator is tested under the following circumstance: (1) Room Temp. (2) 90deg. Stroke (3) The diameter of Solenoid Valve should be 4mm and its flow capacity should be Qn 400L/min. (4) Inner diameter should be 8mm. (5) Neutral clean air. (6) Gas pressure should be 5.5bar(79.75Psi) (7) The actuator should be none load.

ES 單作用扭力值

Spring Return Torque

單作用氣動執行器輸出扭矩(單位:牛米)
Output Torque (Unit: Nm)

規格(Model)	氣源壓力(巴) Air pressure(Bar)																		彈簧輸出扭矩(Springs/output)	
	2		2.5		3		4		5		6		7		8		Start	End		
	0°	90°	0°	90°	0°	90°	0°	90°	0°	90°	0°	90°	0°	90°	0°	90°	Start	End		
ES-50	5	3.7	1.6	5.7	3.6	8.8	4.3	9.0	7.0	14.0	11.1						8.2	5.1		
	6	2.8	0.3	4.6	2.3	5.9	3.0	9.0	5.7	13.1	9.8						7.4	4.2		
	7			3.9	1.0	5.0	1.7	8.1	4.4	12.2	8.5	16.2	12.5				6.6	3.8		
	8							7.2	3.1	11.3	7.2	15.3	11.2	19.3	15.2	23.4	19.3	5.9	3.1	
	9									10.4	5.9	14.4	9.9	18.4	13.9	22.5	18.0	5.1	2.3	
	10										9.5	4.6	13.5	8.6	17.5	12.6	21.6	16.7	4.4	1.8
	11	7.0	3.2	10.6	6.8	12.7	8.1	18.3	13.0	26.8	21.9						10.4	6.8		
	12	5.6	1.0	7.7	2.4	11.2	5.9	16.9	10.8	24.0	17.9						8.2	4.6		
	ES-63	5																14.6	9.6	
		6																10.7	6.8	
		7																8.2	4.6	
		8																15.8	12.3	
9																	12.5	8.2		
10																	10.7	6.8		
11																	15.8	12.3		
12																	12.5	8.2		
ES-75		5	9.0	4.9	14.1	10.0	16.9	11.9	24.8	19.0	35.4	29.9						20.3	14.8	
		6	6.8	1.8	11.9	6.9	14.7	8.9	22.5	15.9	32.5	25.9						16.9	12.3	
		7			9.7	3.9	12.4	5.8	20.3	12.9	30.3	22.9	40.4	33.0				15.0	10.5	
		8																20.3	14.8	
	9																16.9	12.3		
	10																15.0	10.5		
	11																20.3	14.8		
	12																16.9	12.3		
	ES-85	5	14.2	6.6	21.9	14.3	26.2	17.1	3.8	27.7	56.2	46.2						27.6	19.0	
		6	10.8	1.7	18.5	9.4	22.9	12.3	35.0	22.8	50.5	38.3						32.2	22.1	
		7			15.2	4.6	19.6	7.4	31.6	19.0	47.1	33.5	62.5	48.0				36.8	25.3	
		8																41.4	28.5	
9																	46.0	31.6		
10																	50.6	34.8		
11																	55.2	38.0		
12																	49	31		
ES-100		5	32	14	48	30	58	36	85	59	121	96						59	38	
		6	25	3	42	20	52	26	78	48	111	81						68	44	
		7			35	9	45	15	71	38	104	71	137	104				78	50	
		8																88	56	
	9																98	63		
	10																108	69		
	11																118	75		
	12																128	81		
	ES-125	5	47	20	72	45	87	55	89	179	141							94	62	
		6	38	4	61	29	76	38	116	73	167	124						109	73	
		7			50	12	65	22	105	56	156	107	208	159				125	83	
		8																141	94	
9																	156	104		
10																	172	115		
11																	188	125		
12																	129	85		
ES-145		5	84	39	128	83	154	100	224	161	308	247						180	120	
		6	68	12	110	56	136	73	206	133	294	221						206	137	
		7			92	29	118	45	188	106	276	194	363	281				232	154	
		8																257	171	
	9																283	188		
	10																309	205		
	11																293	190		
	12																352	227		
	ES-160	5	120	47	187	114	224	137	329	228	489	373						250	168	
		6	90	3	157	70	195	94	299	184	432	317						232	156	
		7			128	27	165	50	270	140	403	273	537	407				335	223	
		8																375	251	
9																	417	279		
10																	458	307		
11																	500	335		
12																	293	190		
ES-180		5	220	105	327	212	393	255	566	405	784	631						410	265	
		6	178	40	285	147	384	190	524	340	740	556						468	303	
		7			243	82	365	125	482	275	688	491	913	706				527	341	
		8																596	379	
	9																665	417		
	10																734	455		
	11																803	493		
	12																872	531		
	ES-200	5	237	126	369	258	442	309	647	493	908	754						576	379	
		6	179	46	311	178	384	230	589	413	853	677						645	417	
		7			253	99	320	190	531	333	795	597	1058	860				714	455	
		8																783	493	
9																	852	531		
10																	921	569		
11																	990	607		
12																	1059	645		
ES-240		5	341	190	534	388	642	460	941	730	1349	1140						735	473	
		6	255	73	448	266	469	227	855	613	1242	1000						804	511	
		7			361	150	555	344	768	496	1155	883	1542	1270				873	549	
		8																942	587	
	9																1011	625		
	10																1080	663		
	11																1149	701		
	12																1218	739		

ES 雙作用扭力值

Double Acting Torque

雙作用氣動執行器輸出扭矩(單位:牛米)
Output Torque (Unit: Nm)

規格(Model)	氣源壓力(巴) Air pressure(Bar)									
	2	2.5	3	4	4.5	5	5.5	6	7	8
ES-32	3.1	3.8	4.6	6.1	6.9	7.6	8.4	9.2	10.7	12.2
ES-50	8.1	10.1	12.1	16.1	18.1	20.2	22.2	24.2	28.2	32.3
ES-63	14.2	17.8	21.3	28.4	32.0	35.5	39.1	42.6	49.7	56.8
ES-75	20.1	25.2	30.2	40.3	45.3	50.3	55.4	60.4	70.5	80.5

產品 Products



氣動金屬蝶閥
Pneumatic Butterfly



氣動塑料球閥
Pneumatic PVC Ball Valve



氣動食品級球閥
Pneumatic Sanitary Ball Valve



氣動塑料蝶型閥
Pneumatic PVC Butterfly Valve



氣動閥門成套設備
Pneumatic Valve Facility

零件 Parts

角行程氣缸用定位器
Electro-Pneumatic Positioner
(Rotary)



蘭目型氣動用電磁閥
Namur Series Solenoid Valve



氣缸用齒輪箱
Gear box for Pneumatic Actuator



CREATE TO PERFECTION | PERFECTION / INNOVATION / IMAGINATION



EAGLESKY CO., LTD.

No. 50-2, Ln. 320, Sec. 1, Shatian Rd.,
Dadu Township, Taichung County, Taiwan

Tel: 886-4-26933688, 26933690

Fax: 886-4-26933696

E-mail: eaglesky@hibox.hinet.net

Website: www.eaglesky1286.com

>>>Designed by timwell>>> Create Infinite Possibility
STAR GIANT +886-4-24266228

www.timwell.com.tw

Copyright © 2010 Eaglesky. All rights reserved. Specifications subject to change without notice.

