

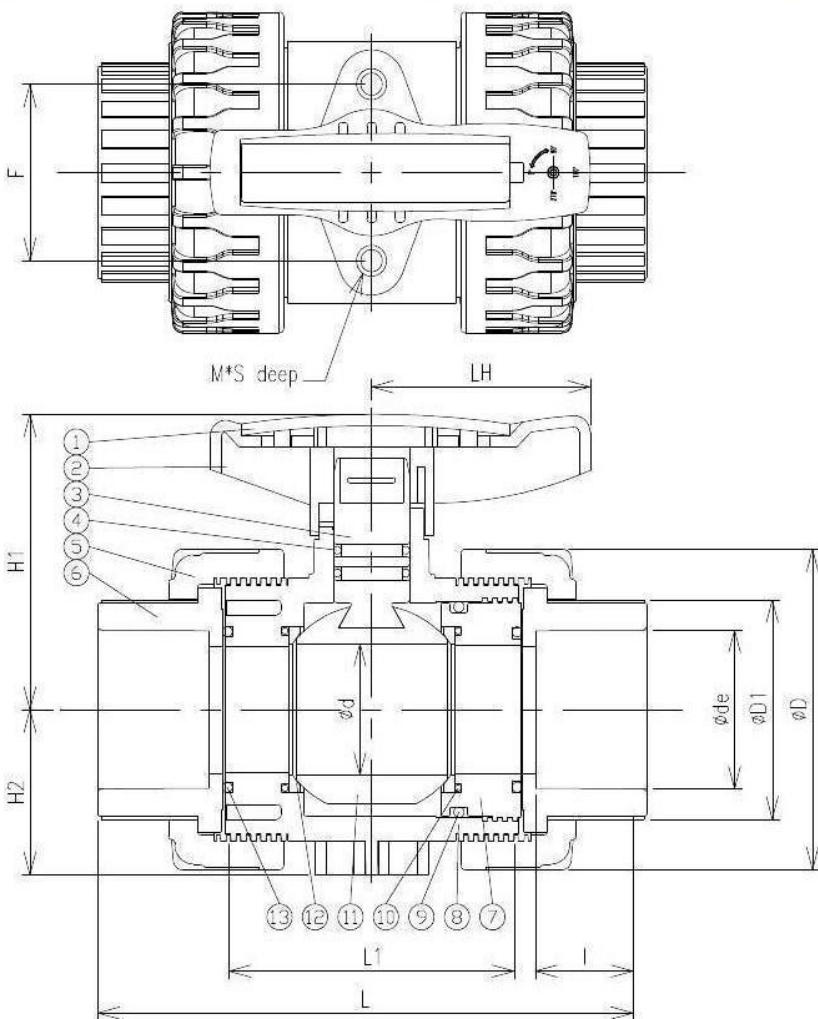


EAGLESKY CO., LTD.

TRUE UNION BALL VALVE 1/2" ~ 2-1/2"



- Working pressure : 150 PSI / 73°F
- Full port design
- Easy Maintenance
- Easy automated
- Teflon seat
- Double O-ring stem seals
- Light torque
- Made in Taiwan



No	PARTS NAME	QTY	MATERIAL
1	HANDLE CAP	1	ABS
2	HANDLE	1	ABS
3	STEM	1	PVC, CPVC
4	O-RING	2	EPDM, FPM
5	NUT	2	PVC, CPVC
6	CONNECTOR	2	PVC, CPVC
7	CARRY	1	PVC, CPVC
8	BODY	1	PVC, CPVC
9	O-RING	1	EPDM, FPM
10	O-RING	2	EPDM, FPM
11	BALL	1	PVC, CPVC
12	SEAT	2	PTFE
13	O-RING	2	EPDM, FPM

SIZE	F	M	S
1/2" (15mm)	30	3.5	6
3/4" (20mm)	33	5	8
1" (25mm)	40	6	12
1-1/4" (32mm)	47	8	11
1-1/2" (40mm)	54	8	12
2" (50mm)	70	8	15
2-1/2" (65mm)*	70	8	15

SIZE	D	L	ANSI		DIN		JIS		CNS		NPT	BSPT	BSPF	D1	d	L1	LH	H1	H2
			ø de	l	ø de	l	ø de	l	ø de	l									
1/2" (15mm)	46	116	21.34	22.5	20	20	22	22.5	22	22.5	14	14	14	32	13	62	45	49	23.5
3/4" (20mm)	56	133	26.67	25.7	25	23	26	25.7	26	25.7	14	14	14	38	19	72	52	60	29
1" (25mm)	66	150	33.4	28.9	32	26	32	28.9	34	28.9	11.5	11	11	45	25	80	58	69	35
1-1/4" (32mm)	82	168	42.16	33.8	40	31	38	33.8	42	33.8	11.5	11	11	55	31	87	66	76	42.5
1-1/2" (40mm)	98	173	48.26	35	50	34	48	35	48	35	11.5	11	11	67	40	94	69	91	50.5
2" (50mm)	120	206	60.32	38.5	63	38.5	60	38.5	60	38.5	11.5	11	11	81	50	112	81	110	61
2-1/2" (65mm)*	120	211	73.02	41.5	75	41.5	76	41.5	76	41.5	8	11	11	89	50	112	81	110	61

*Decrement Type-inside diameter 50

Technical Information

Item	Description	Size	Material		
			Body	Seat	O-ring
(1)	True Union Ball Valve	1/2"(DN15)	PVC,CPVC	PTFE	EPDM,FPM
(2)	True Union Ball Valve	3/4"(DN20)	PVC,CPVC	PTFE	EPDM,FPM
(3)	True Union Ball Valve	1"(DN25)	PVC,CPVC	PTFE	EPDM,FPM
(4)	True Union Ball Valve	1-1/4"(DN32)	PVC,CPVC	PTFE	EPDM,FPM
(5)	True Union Ball Valve	1-1/2"(DN40)	PVC,CPVC	PTFE	EPDM,FPM
(6)	True Union Ball Valve	2"(DN50)	PVC,CPVC	PTFE	EPDM,FPM
(7)	True Union Ball Valve	2-1/2"(DN65)*	PVC,CPVC	PTFE	EPDM,FPM

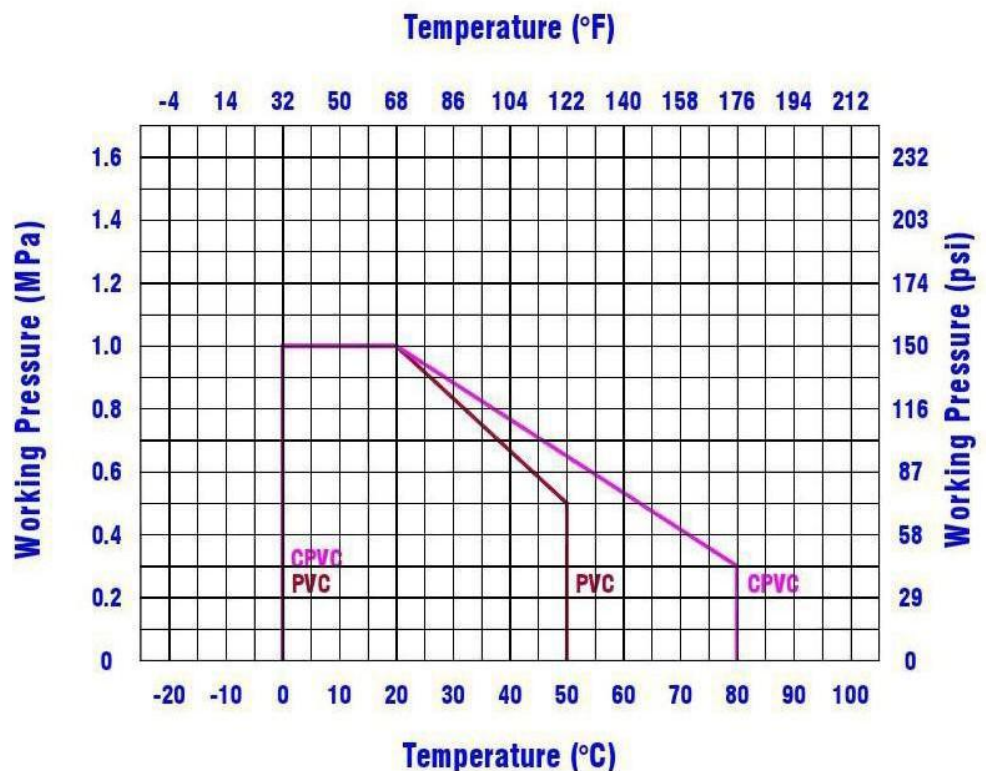
*:Decrement type:inside diameter 50mm

Size	Hydrostatic Testing		Seat and O-ring Tests		Torque kg*cm	Cv
	Burst pressure water(kg/cm ²) min	Long-term behaviour test water(kg/cm ²)	Seat valve close air kg/cm ²	O-ring valve open air kg/cm ²		
1/2"(DN15)	42	22	6	6	25	8
3/4"(DN20)	42	22	6	6	30	15
1"(DN25)	42	22	6	6	35	29
1-1/4"(DN32)	42	22	6	6	65	75
1-1/2"(DN40)	42	22	6	6	75	90
2"(DN50)	42	22	6	6	95	140
2-1/2"(DN65)*	42	22	6	6	95	140

*:Decrement type:inside diameter 50mm

**Pressure Loss
Calculation Formula**
 $\Delta P = (Q/Cv)^2$

ΔP : Pressure Drop
 Q : Flow in GPM
 Cv : Flow Coefficient



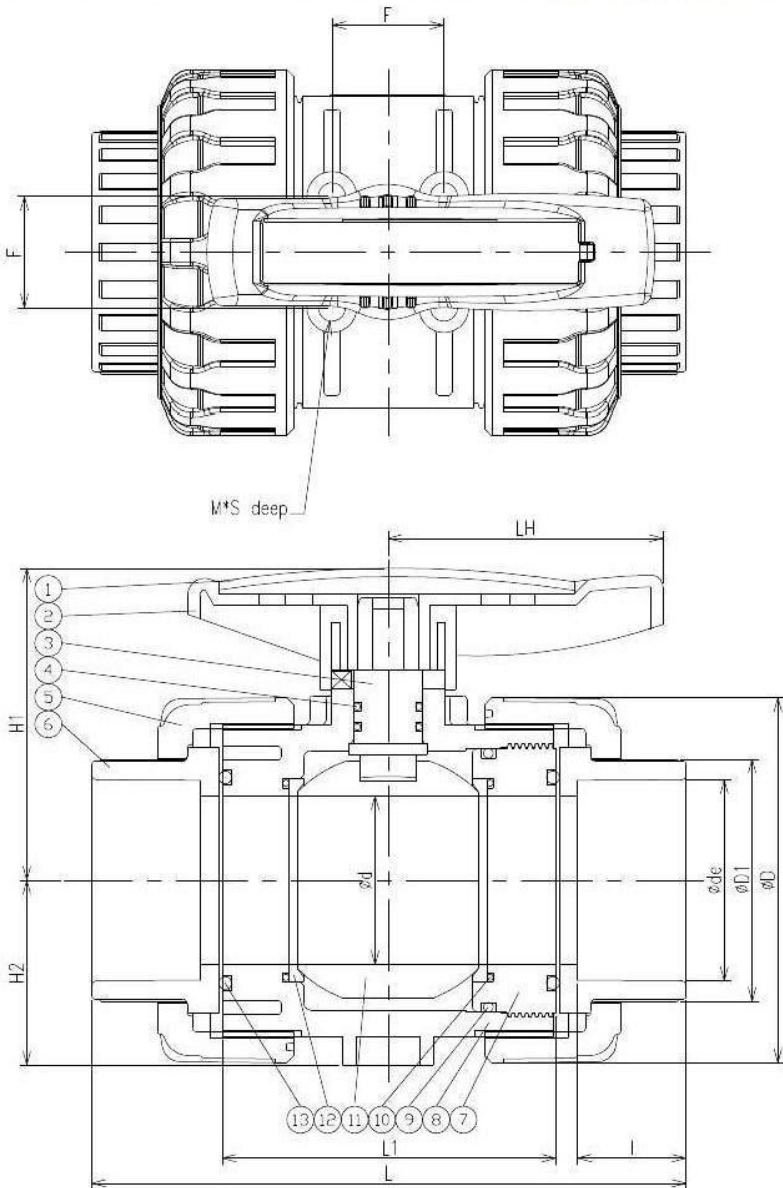


EAGLESKY CO., LTD

TRUE UNION BALL VALVE 2-1/2" ~ 4"



- Working pressure : 150 PSI / 73°F
- Full port design
- Easy Maintenance
- Easy automated
- Teflon seat
- Double O-ring stem seals
- Light torque
- Made in Taiwan



No	PARTS NAME	QTY	MATERIAL
1	HANDLE CAP	1	ABS
2	HANDLE	1	ABS
3	STEM	1	PVC, CPVC
4	O-RING	2	EPDM, FPM
5	NUT	2	PVC, CPVC
6	CONNECTOR	2	PVC, CPVC
7	CARRY	1	PVC, CPVC
8	BODY	1	PVC, CPVC
9	O-RING	1	EPDM, FPM
10	O-RING	2	EPDM, FPM
11	BALL	1	PVC, CPVC
12	SEAT	2	PTFE
13	O-RING	2	EPDM, FPM

SIZE	F	M	S
2-1/2" (65mm)	49.5	8	15
3" (80mm)	49.5	8	15
4" (100mm)	72	10	20

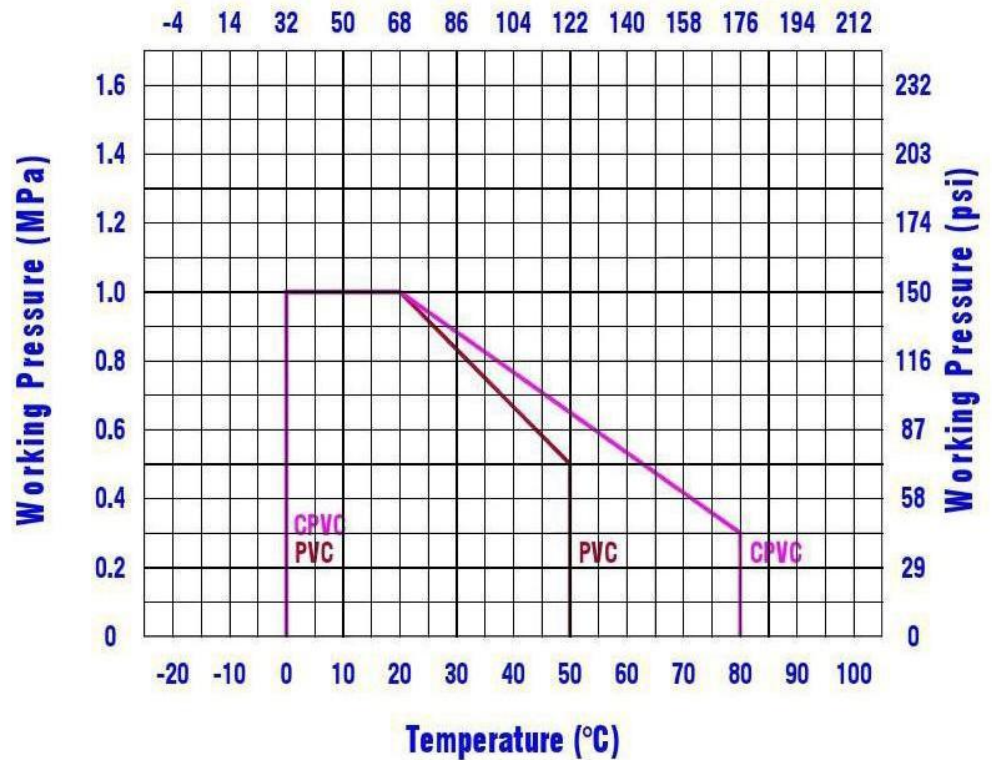
SIZE	D	L	ANSI		DIN		JIS		CNS		NPT	BSPT	BSPF	D1	d	L1	LH	H1	H2
			∅ de	l	∅ de	l	∅ de	l	∅ de	l									
2-1/2" (65mm)	162	254	73.02	45	75	45	76	45	76	45	8	11	11	92	75	147	118	140	82
3" (80mm)	162	262	88.9	48	90	51	89	51	89	51	8	11	11	108	75	147	118	140	82
4" (100mm)	220	311	114.3	57.5	110	61	114	61	114	61	8	11	11	134	100	177	140	185	111

Technical Information

Item	Description	Size	Material		
			Body	Seat	O-ring
(1)	True Union Ball Valve	2-1/2"(DN65)	PVC,CPVC	PTFE	EPDM,FPM
(2)	True Union Ball Valve	3"(DN80)	PVC,CPVC	PTFE	EPDM,FPM
(3)	True Union Ball Valve	4"(DN100)	PVC,CPVC	PTFE	EPDM,FPM

Size	Hydrostatic Testing		Seat and O-ring Tests		Torque kg*cm	Cv
	Burst pressure water(kg/cm ²) min	Long-term behaviour test water(kg/cm ²)	Seat valve close air kg/cm ²	O-ring valve open air kg/cm ²		
2-1/2"(DN65)	31	22	6	6	150	330
3"(DN80)	31	22	6	6	150	480
4"(DN100)	31	22	6	6	250	600

Temperature (°F)



Pressure Loss
Calculation Formula

$$\Delta P = (Q/Cv)^2$$

ΔP : Pressure Drop
Q : Flow in GPM
Cv : Flow Coefficient